

Wing Haven Gardens & Bird Sanctuary

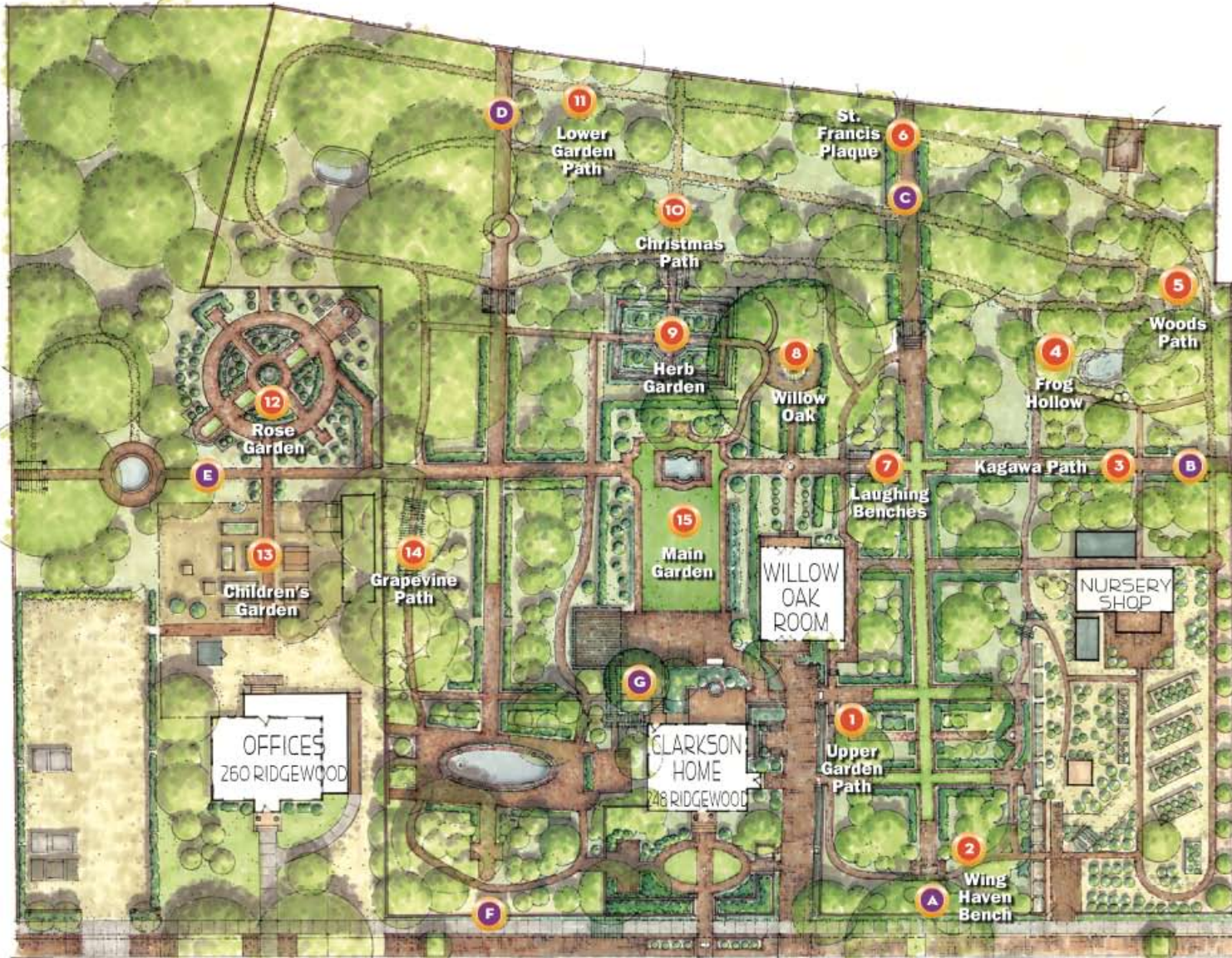


WING HAVEN POINTS OF INTEREST

- A. View from the front to the back garden wall
- B. Vista from side to side
- C. View from the back to the front wall of the garden
- D. Lower garden vista running from the back wall to the front
- E. Vista from the rose garden pool to the Kagawa Plaque
- F. View from the front to the back wall of the garden
- G. *Vitex Agnus-castus*, Wing Haven's National Champion Tree

GARDEN REMINDERS

- Allow at least one hour to tour the garden
- Follow the white arrows
- Please stay on the brick paths
- Please keep children at your side
- Please do not smoke or litter
- Refrain from using cell phones
- Please be careful on the paths as they can be very slippery



WING HAVEN GARDENS & BIRD SANCTUARY
ORIGINAL RESIDENCE OF ELIZABETH & EDWIN CLARKSON

RENDERING BY ALLISON MERRIMAN



248 Ridgewood Avenue, Charlotte, NC 28209
704.331.0664 | F: 704.331.9368
winghavengardens@carolina.rr.com

For visiting hours, please see our website:
winghavengardens.com



The Wing Haven Foundation owns and operates Wing Haven Gardens & Bird Sanctuary and the Elizabeth Lawrence House & Garden. It is supported by its members, friends, and with operating support from the Arts & Science Council of Charlotte-Mecklenburg, Inc.